

# SDE-50

## Electrode Drying Oven with Digital Thermostat



The SDE range of drying and storing ovens are large, thermally controlled cabinets designed specifically for welding electrodes. Ideally, a facility should have separate ovens for drying and storing. However with the SDE manual digital thermostat the same oven can be used for both drying and storing. Designed for stationary applications these come with heavy lockable castors to move around then lock in place. Additionally a gas vent safely removes humidity and gases during the heating process.

Heavy insulation, rugged industrial design, external surfaces with electrostatic paint coating and heavy lockable castors make these ovens a great investment for long-term easy use.

### Industry

- Process Industry
- Tank and Vessel Fabrication
- Light Equipment

- 50 kg electrode drying and storing capacity
- 800 °C-rated fiberglass door seals keep heat inside
- Rockwool insulated premium steel construction for durability and long life
- Heats up quickly and cools down slowly, making these energy efficient. Retains heat for up to 8 hours when unplugged
- Two removable trays (220 x 440 x 70 mm) for convenient loading, unloading and cleaning

Visit [esab.com](http://esab.com) for more information.



### Specifications

Capacity	50 kg
Storage Temperature	100 - 400 °C
Drying Temperature (Max)	400 °C
Input Voltage	3ph 380 - 415 V (1ph 220 - 250 V)
Output Power	3000 W
Output Current	14 A
Dimensions LxWxH	700 x 530 x 1070 mm
Weight	75 kg

# SDE-50

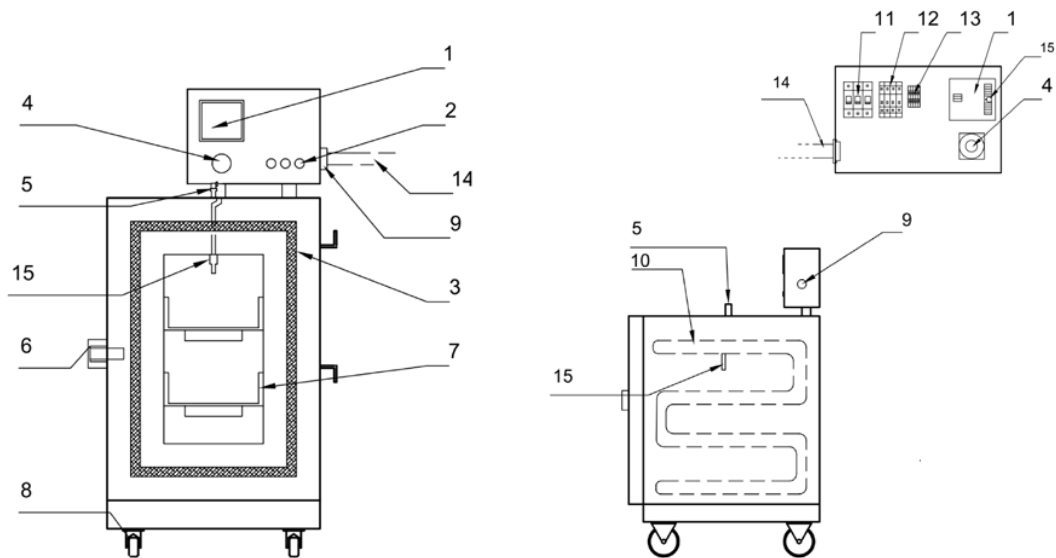
## Ordering Information

SDE-50 Electrode Drying Oven, 3ph 400V AC 50/60Hz	0700100092
SDE-50 Electrode Drying Oven, 1ph 220V AC 50/60Hz	0700100058

## Wear & Spare Parts

1	Digital Thermostat DT-109A	0700100002
2	Signal Lamp 230V	0700100003
2	Signal Lamp 110V	0700100004
3	Fiberglass Wick SDE-50	0700100098
4	Power Switch	0700100018
5	Air Valve	0700100020
6	Door Handle	0700100006
7	Tray	0700100054
8	Castors without Brake Back	0700100008
8	Castors with Brake Front	0700100009
9	Cable Gland - SDE/SDF	0700100031
10	Heating Element 230V - SDE/SDF	0700100011
10	Heating Element 110V - SDE/SDF	0700100012
11	Contactors 230V	0700100017
11	Contactors 110V	0700100023
12	Fuse (automatic) 10A	0700100015
12	Fuse (automatic) 2A	0700100016
13	Terminal	0700100019
14	Power Cord 400V with plug CEE 5x32A	0700100013
14	Power Cord 110V with plug - SDE/SDF	0700100014
15	Thermocouples SDE/SDF	0700100165

Spare parts only available for SDE-50 3ph (0700100092). No spare parts available for SDE-50 1ph (0700100058).



ESAB / [esab.com](http://esab.com)

